

# CERTIFICATE OF LOCATION OF GOVERNMENT CORNER

Northeast \_\_\_\_\_ Corner of Section 7, Township 108, Range 39, 5th P.M.

STATE OF MINNESOTA, County of Murray

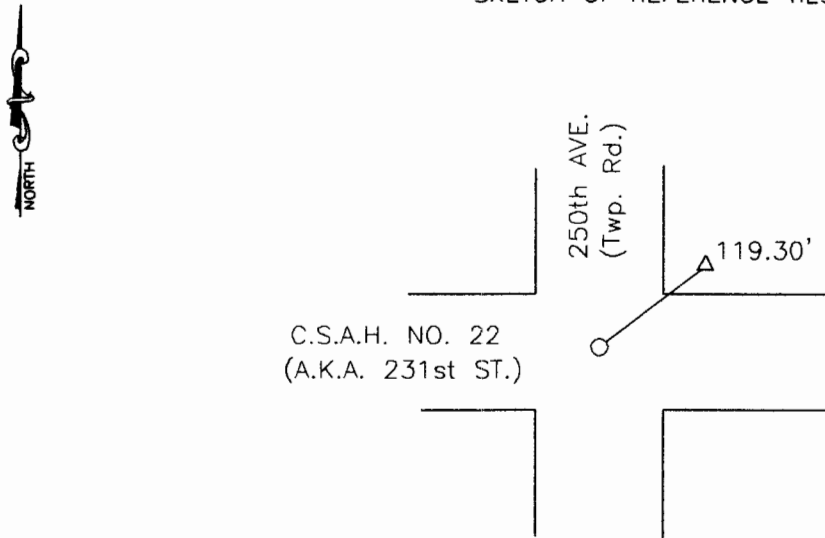
At the corner location shown on the sketch:

On Nov. 17, 1998 found a 5/8" iron stake  
DATE

left monument as found,  lowered monument,  removed monument (explain)

On \_\_\_\_\_ placed a \_\_\_\_\_  
DATE

### SKETCH OF REFERENCE TIES



Top center of telephone pedestal 119.30' NE

Statement of evidence relative to this corner location is on back of page.

I hereby certify that this document and the data contained herein was prepared by me or under my direct supervision.

Lyle C. Moring 11-19-98  
SIGNATURE DATE

Registration No. 11943

- Land Surveyor,  Professional Engineer
- County Surveyor,  County Engineer

### OFFICE OF THE COUNTY RECORDER

County of \_\_\_\_\_

I hereby certify that this document was filed in the Co. Recorders office at \_\_\_\_\_ .M on the \_\_\_\_\_ day of \_\_\_\_\_ A.D. 19 \_\_\_\_\_

County Recorder \_\_\_\_\_

By \_\_\_\_\_, Deputy

DOCUMENT NO. \_\_\_\_\_

## Statement of Evidence

### Original survey

On May 13, 1899, J.W. Woolstercraft palced a stone at the corner.

In 1963 the Murray County Highway department dug and found a stone. Placed a steel pine over stone.

On November 17, 1998, Moseng Land Surveying, found 5/8" iron pin at the road surface.